



MAXAR® GEOSPATIAL PLATFORM (MGP)



DATA SHEET

MGP Pro

MGP Pro is the premier, cloud-based subscription platform for secure and timely access to Earth Intelligence. With a broad range of imagery and geospatial data products, MGP Pro provides unrivaled coverage, quality and flexibility.

With MGP Pro, subscribers can access over 3 million square kilometers of daily image collections, plus more than 6 billion square kilometers of archived imagery at up to 30 cm resolution.

On-demand access to Earth Intelligence

Maxar® satellite imagery is available to download or stream in MGP Pro within hours of collection, so you can monitor and communicate relevant activity in any location around the globe.

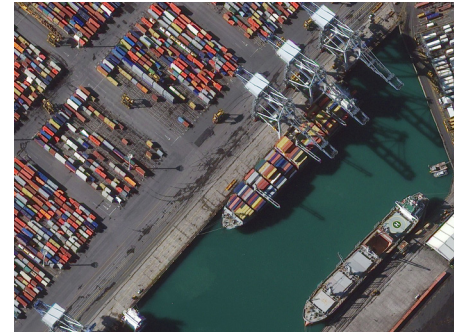
MGP Pro offers the best value for a wide range of geospatial projects such as supporting mapping, detecting change over time, monitoring assets, responding to disasters, humanitarian efforts and more.

Features and benefits

- Highest commercially available resolution; up to 30 cm and derived 15 cm HD
- Global coverage
- Imagery available within hours of acquisition
- Key metadata included
- Time-lapse image archive for change detection
- True color, orthorectified image strips and mosaics available for offline use
- Refresh alerts for your area of interest
- Precision3D™ Ordering
- Change Monitoring (CM)
- Full MGP API access
- Make timely, informed decisions
- Leverage Maxar's 20+ year, 125+ petabyte image archive
- Access to stereo pairs
- Increase efficiency with frequent updates
- Tasking via user interface (UI) or application programming interface (API)
- On-demand access via the GIS tool of your choice to extract the information you need
- No geographical or concurrent user restrictions
- Privacy



INTELLIGENCE-GRADE RESOLUTION



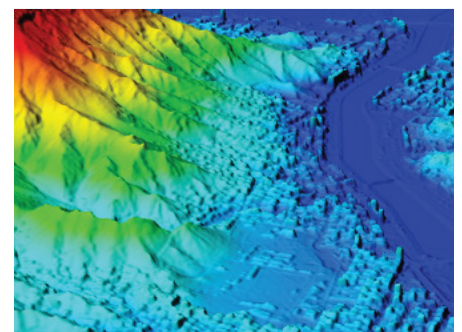
WorldView-3 | 30 cm | Auckland, New Zealand

PRECISION MAPPING



Vivid | 30 cm | Austin, Texas, United States

PRECISION3D ORDERING



Precision3D DSM of Al Mukalla, Yemen

MAXAR

Specifications

Electro-optical	WorldView Legion, WorldView-4, 3, 2, 1, GeoEye-1, QuickBird and enriched third-party sensor data
Imagery resolution	30-100 cm GSD pan-sharpened at nadir
Image bands	<div><div></div><div>- Full resolution viewing and rapid downloading imagery is panchromatic (WorldView-1) and 3-band pan-sharpened natural color (all other sensors)</div><div>- 8 band visible near infrared (VNIR)</div></div>
Stereo Imagery	<div><div></div><div>- Full access to Maxar stereo archive. Image pairs are delivered as System-Ready (level 1B) with full metadata</div></div>
Precision3D	Industry leading accuracy: Absolute: 3 m LE90, 3 m CE90, Relative: 1 m LE90, 1 m CE90 at 0.5m post-spacing
Imagery accuracy	8.4 m CE90, for most hosted imagery
API Discovery & Ordering	Full MGP API access to 125+ petabyte imagery archive
Vivid® basemaps	<div><div></div><div>- Advanced 15 cm HD, 5 m CE90</div><div>- Standard 30 cm HD, 5 m CE90</div></div>
Tasking	<div><div></div><div>- Priorities: Select and Select Plus</div><div>- Areas: Low demand and high demand</div></div>
Change Monitoring (CM)	<div><div></div><div>- CM Electro-optical</div><div>- CM Synthetic aperture radar</div></div>

Development of Subi Reef, South China Sea



WorldView-3 | Pan-sharpened natural color

01/08/2014



WorldView-2

Pan-sharpened natural color

07/21/2015



WorldView-3

Pan-sharpened natural color

08/20/2019



WorldView-3

Pan-sharpened color infrared

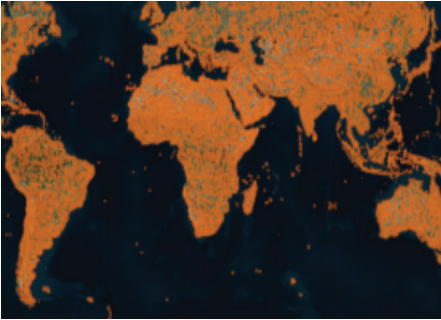
03/21/2023



WorldView-3

Pan-sharpened natural color

RECENT IMAGERY COLLECTIONS



Six months of new imagery collections shown as orange areas

DELIVERABLES

Access to MGP Pro via:

- MGP APIs (including OGC)
- Web browser interface
- Esri ArcGIS, ArcGIS Pro
- QGIS

SUBSCRIPTIONS

Subscriptions include:

- Access to the complete Maxar optical image library
- Available at multiple pricing levels based on data consumption or streaming seats

SECURITY

- Active prevention of SQL-Injection, cross-site scripting, DoS and DDoS attacks
- Web Application Firewall that performs deep inspection of all web traffic
- HTTPS encryption of all communication between client and server
- Multi-tiered firewall approach to ensure customer data protection
- SFTP/FTPS, AWS S3, Google Cloud and Azure Cloud secure downloads are supported

